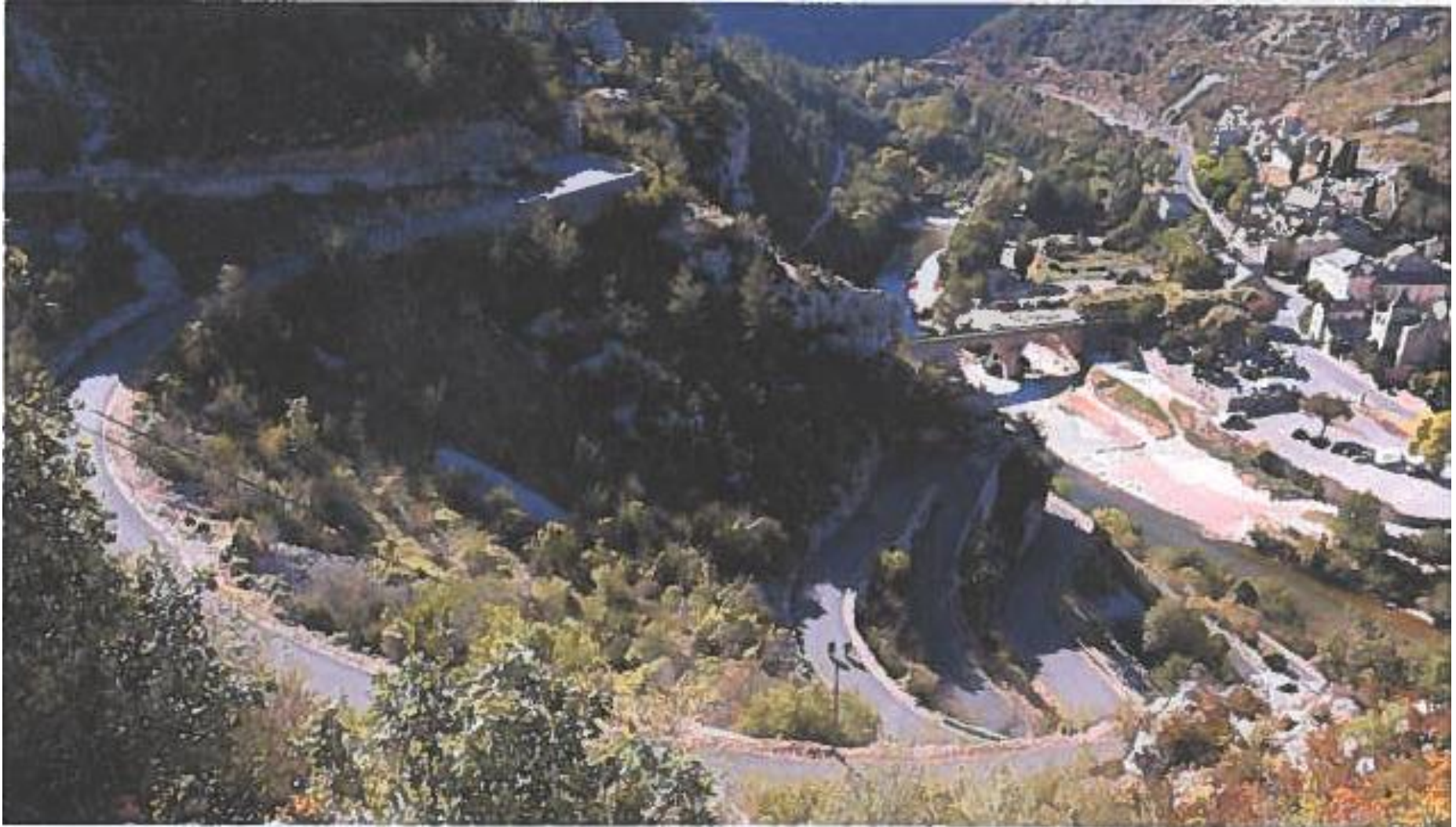


# Séjour dans le Tarn 24-27 sept 2021

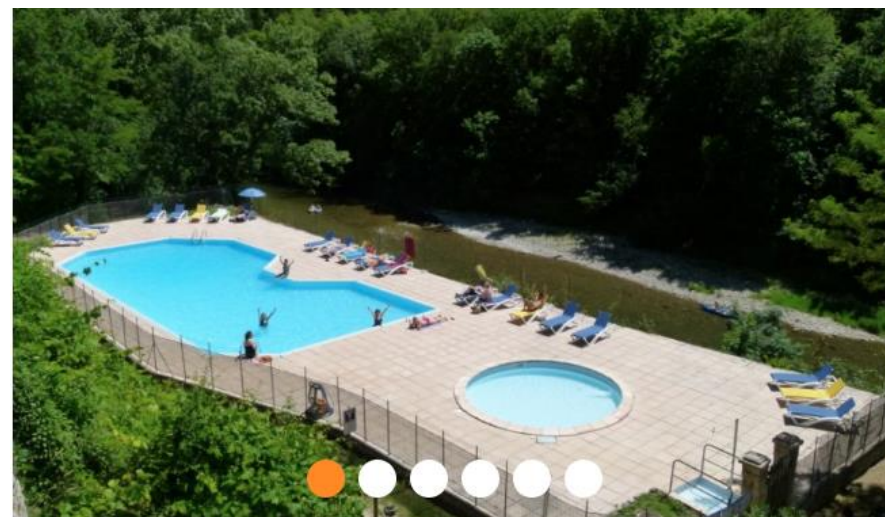
départ vendredi matin – retour lundi APM



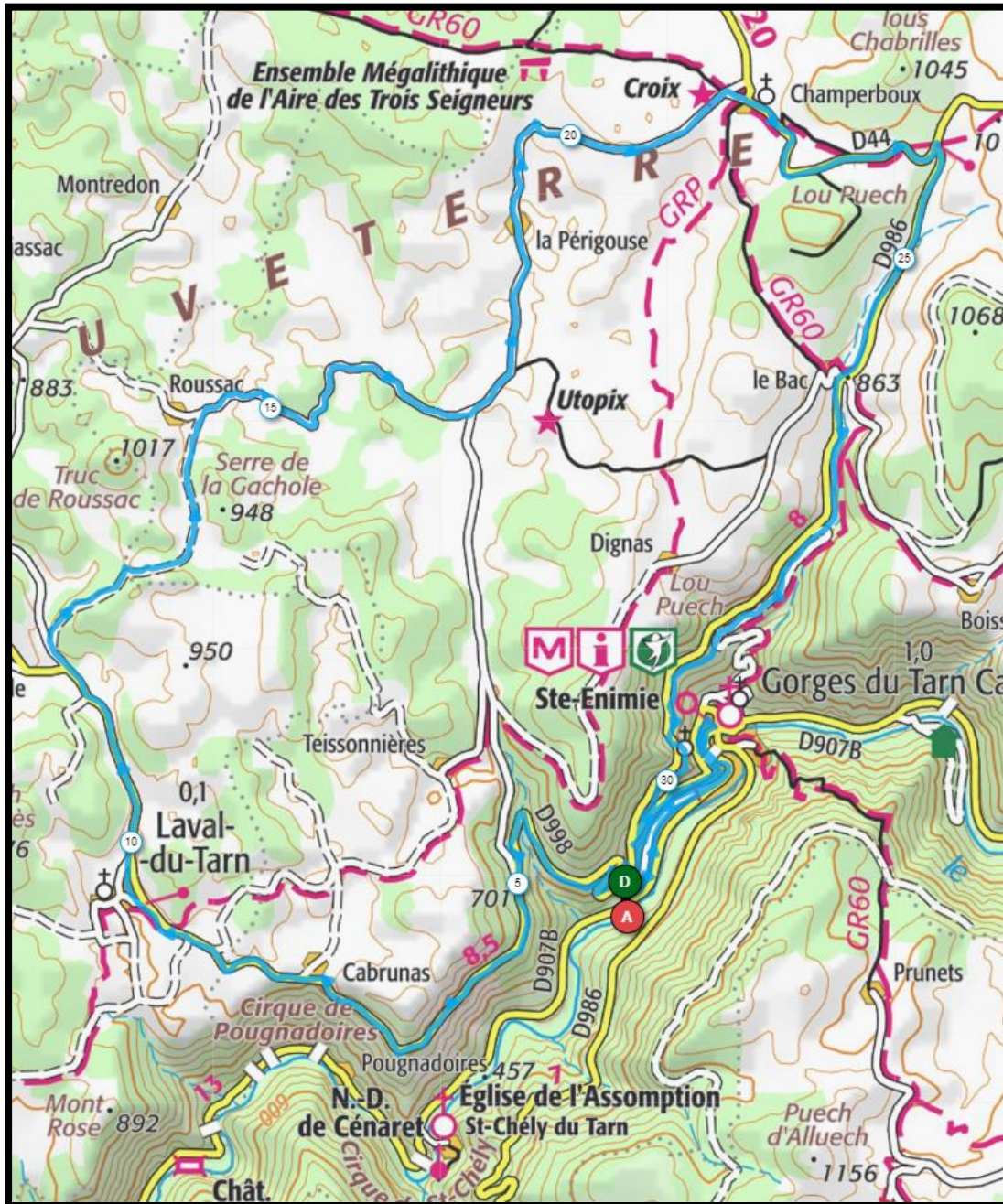


Route de Millau      Tél. 04 66 48 50 53  
48210 Sainte Enimie    [contact@campingcouderc.fr](mailto:contact@campingcouderc.fr)

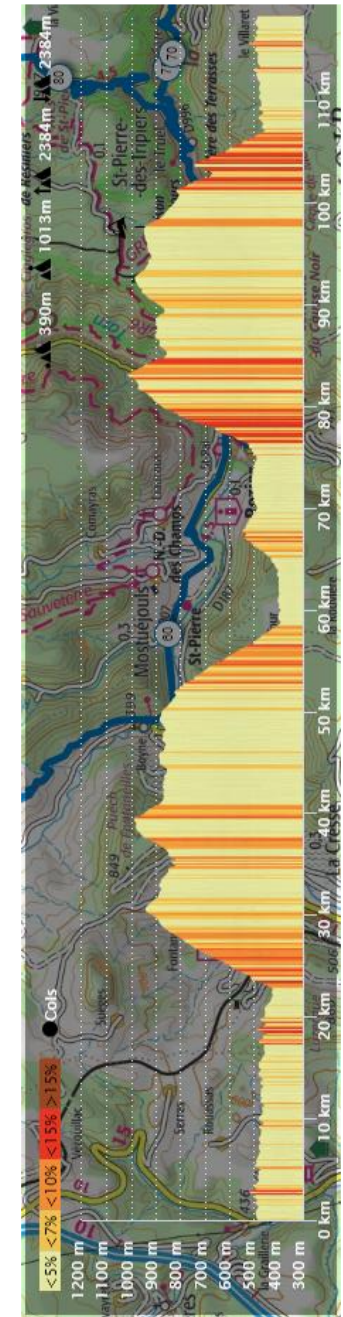
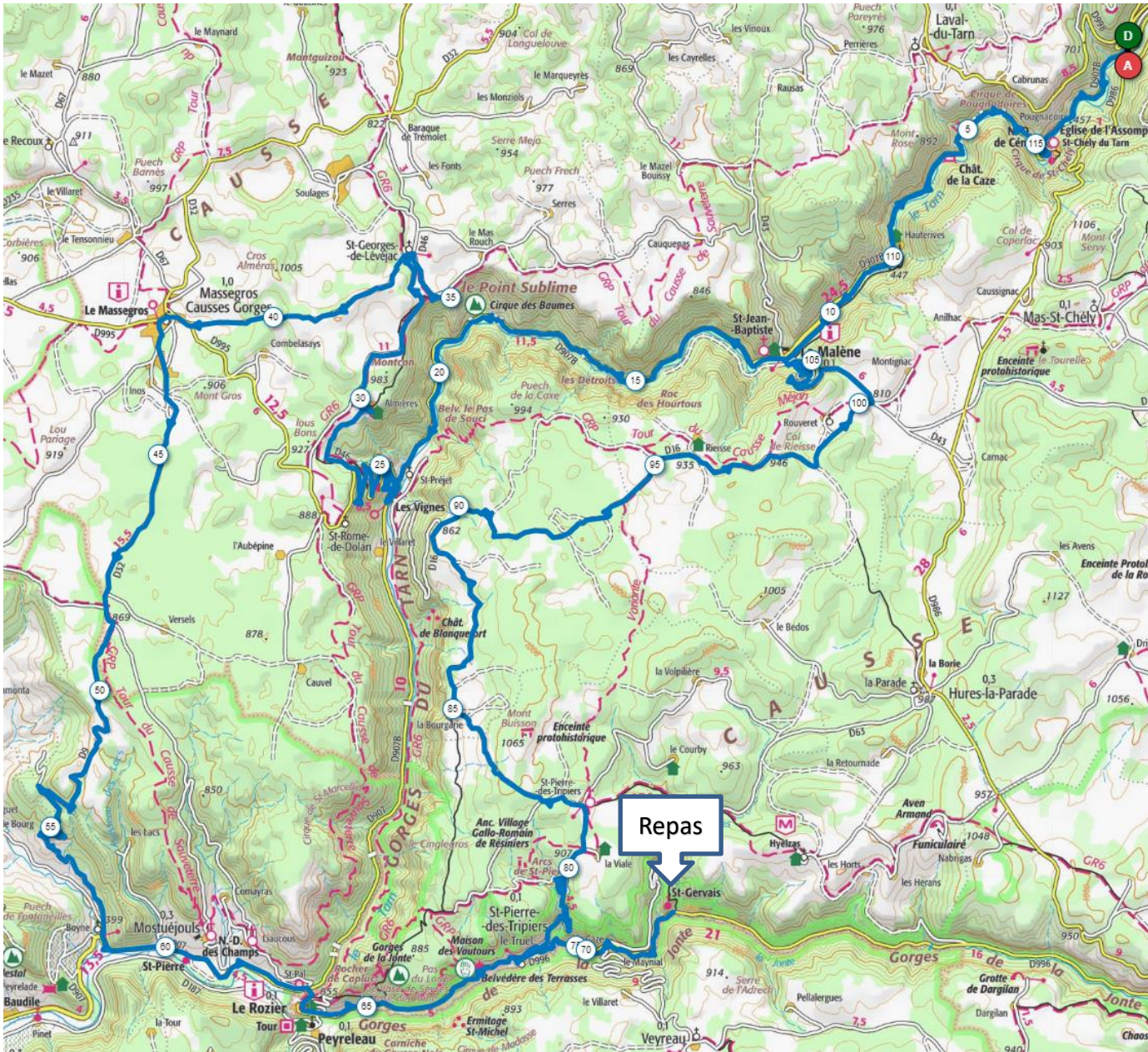
Trajet via Clermont - Ste Enimie : 587km 6h



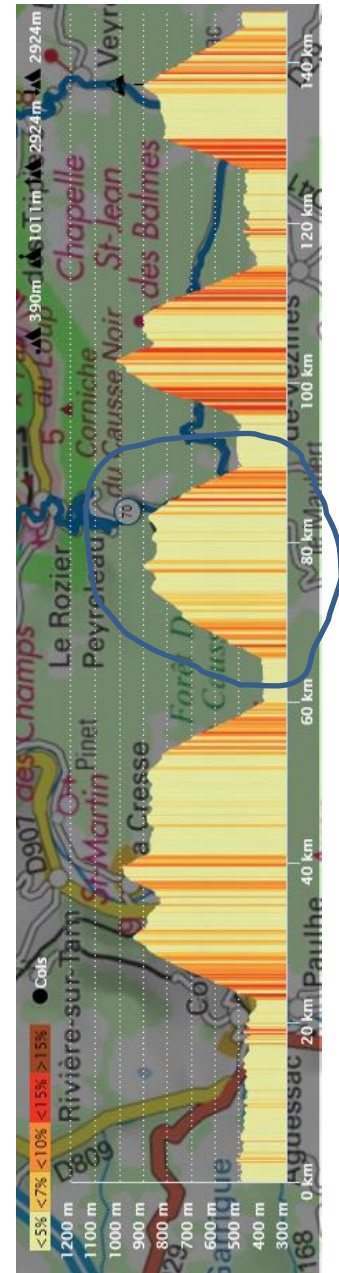
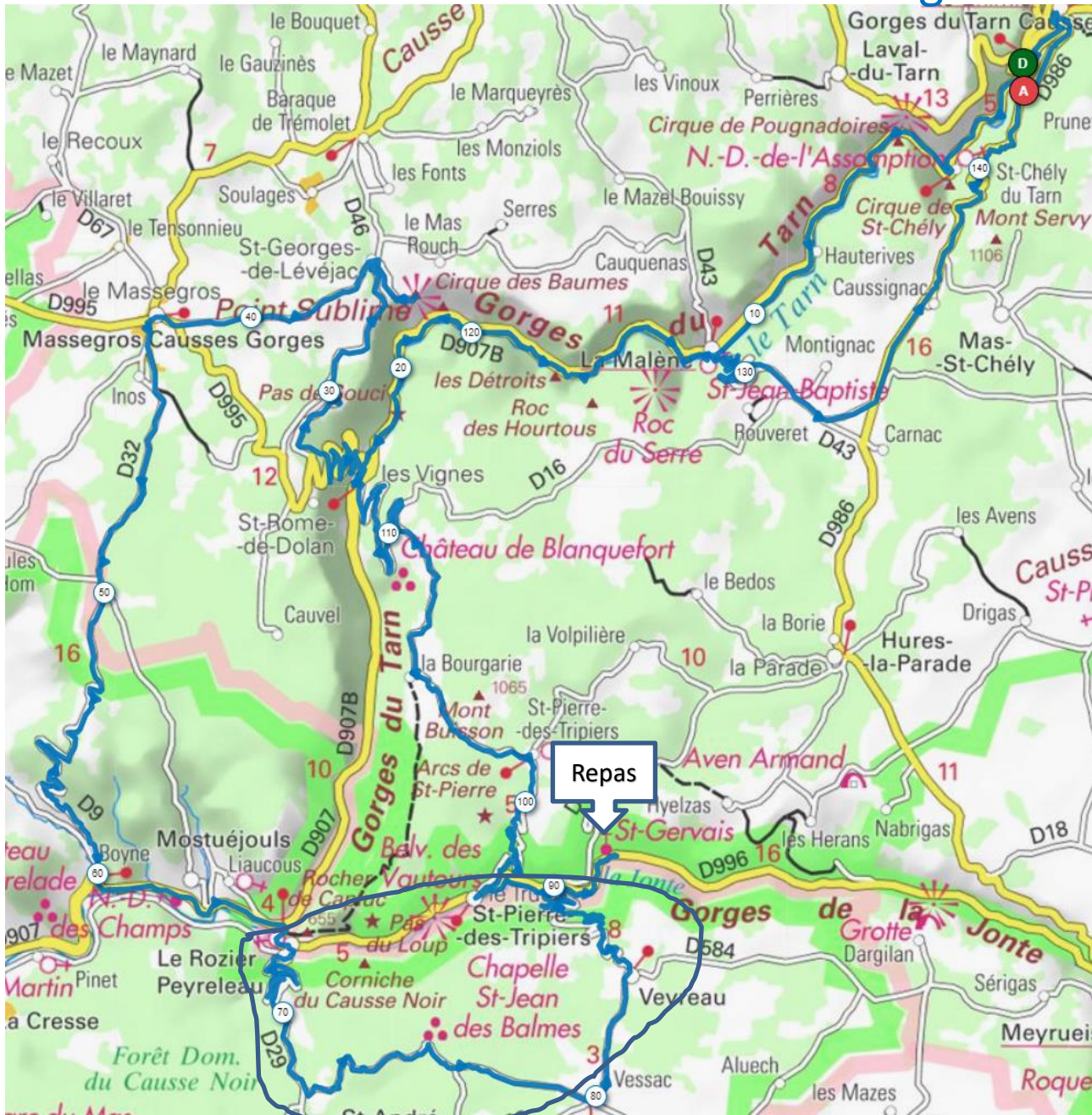
# Vendredi APM : Ste Enimie - Laval du Tarn 34km +660m



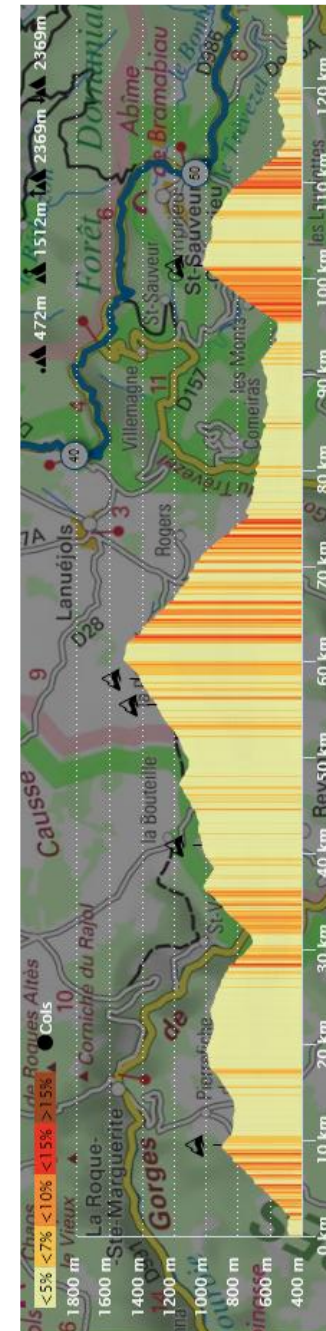
# Samedi : Ste Enimie – Le Rozier court 118km +2384m



# Samedi : Ste Enimie – Le Rozier long 146km +2924m



# Dimanche : Ste Enimie - Mont Aigoual - Florac court 128km +2369m



# Dimanche : Ste Enimie - Mont Aigoual - Florac long 151km +2993m

